

# daxa

TECHNOLOGIES

---

## P450*Pro*

Pico projector



**User Guide**

# Caution!

**WARNING:** Please use this product as instructed. Misuse may cause injury or death.



DO NOT use while driving.



DO NOT expose to water or wet surfaces. Electric shock may occur.



DO NOT expose the projected LED image to your eyes or the eyes of others.



DO NOT block or restrict airflow from ventilation holes as this may cause the projector to overheat.



Keep the projector and charger away from any heat sources.

## Caution for Headphone Use

- Prolonged use at high volume may impair your hearing.
- High volume during walking or driving may cause distractions and result in injury or death.

# Table of Contents

## Chapter 1: P450 Pro at a Glance

P450 Pro Introduction	1
Remote & Keypad	2
Accessories	3

## Chapter 2: Getting Started

Focus Adjustment / Throw Distance	5
External Input/Outputs	6
Navigating the Main Menu	7
Connecting to a Computer HDMI	9
Playing 3D Through HDMI	12
Connecting to a Computer VGA	13
Connecting to Composite Video	15
Loading External Content	17
Video Player Menu	20
Playing 3D Videos	24
Viewing Pictures	27
Viewing 3D Pictures	31

Viewing Productivity Docs	32
Smartphone Mirroring	37
Connecting to Wi-Fi	40
Streaming Applications	42
Connecting to Bluetooth	44

## Chapter 3: Settings Menu

Application Manager	48
Bluetooth & Networks	49
System Update & Language	50
Projector Settings & About	51
Other Applications	52
Keystone	53

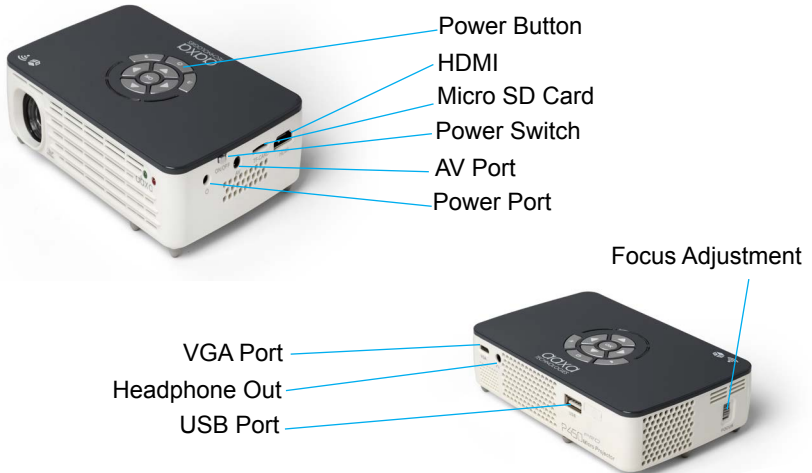
## Chapter 4: Technical Details

Troubleshooting	55
Specifications	57
Notes	58

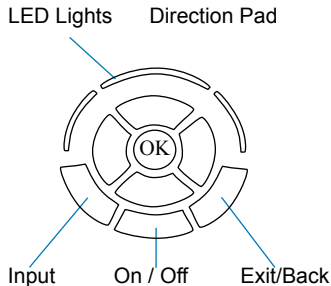
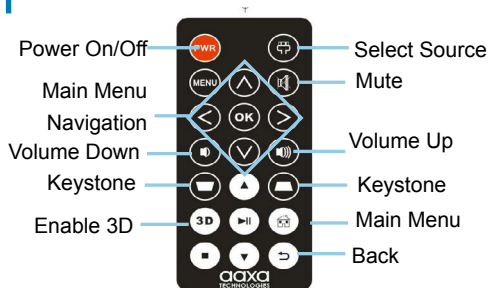
# P450-Pro at a Glance

## Chapter 1

### Main Unit Front/Back



# Remote & Keypad



## Remote

Both the keypad and remote can be used to navigate through the menus. The Main Menu Navigation on the remote functions exactly the same as the directional pad on the P450 Pro unit, however the remote control has additional functions inaccessible by the onboard keypad.

*NOTE: Pressing power on the remote will only put the projector in STANDBY mode. Toggle the "ON/OFF" switch on the side of the projector to fully turn the projector off.*

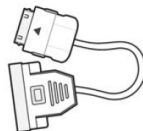
# Accessories



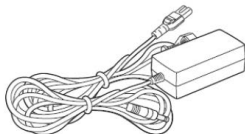
Tripod



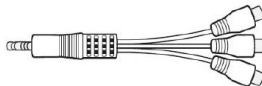
Remote



VGA Cable



Power Adapter



AV Cable


*\*Under various circumstances, the actual accessories may be different from those shown in the pictures above.*

*Additional accessories are available for purchase at [www.aaxatech.com](http://www.aaxatech.com)*


# Getting Started

## Chapter 2

### Powering ON the projector

1. Connect the power cord to the P450-Pro.
2. Connect the other end of the power cord into the wall power source.
3. Toggle the On / Off switch on the side of the projector to the "ON" position --the projector should automatically turn on.
4. If the projector does not automatically turn on with the "Power Switch" toggled to the "ON" position, press the "ON/OFF POWER"  button on the keypad and hold for 2-3 seconds to start the projector

### Standby Mode

1. To transition to "STANDBY" mode, press the power button  twice on the keypad or the remote control.
2. The optical engine should power off and the fan should stop spinning. The projector is now in "STANDBY" mode and can be turned on using the remote control.

**NOTE: Standby mode will still consume a small amount of power.**

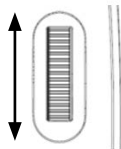
### Powering OFF the projector

1. To turn off the projector, toggle the "Power Switch" to the "OFF" position. This will fully turn off the projector.

# Focus Adjustment / Throw Distance

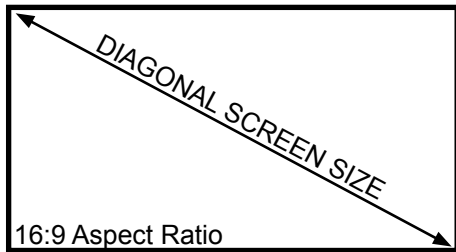
## Focus Adjustment

- Spin the focus wheel up or down until the image becomes clear.



## Throw Distance Chart

Throw Distance	Diagonal Size
Units: Inches	Units: Inches
20	19
30	29
40	38
50	48
60	57
70	67
80	76
90	86
100	96



Throw Ratio 1.2

Projection Angle: 100% Offset

\*minimum throw distance: 20 inches



# External Inputs and Outputs



# Navigating the Main Menu



## Main Menu

The Main Menu allows access to all the features of the P450 Pro.

Note: While the Keypad and Remote Control are usable to access the basic features of the P450 Pro, it is recommended to use a mouse, either USB or Bluetooth.

- **HDMI** - Brings up connection via HDMI
- **PC-VGA** - Brings up connection via VGA
- **Video-RCA** - Brings up connection via AV
- **Browser** - Brings up internet browser



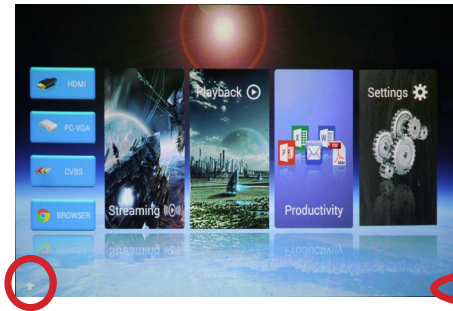
- **Streaming** - Stream movies or videos from YouTube, Netflix, Vevo, and more
- **Playback** - View files from external devices such as SD card and USB
- **Productivity** - Brings up E-mail Client, Office Viewer, Calculator, Calendar and Gallery
- **Settings** - Brings up Application Manager, Network Settings, Bluetooth Settings, Language Settings, System Update and Projector Settings.

# Navigating the Main Menu Cont.

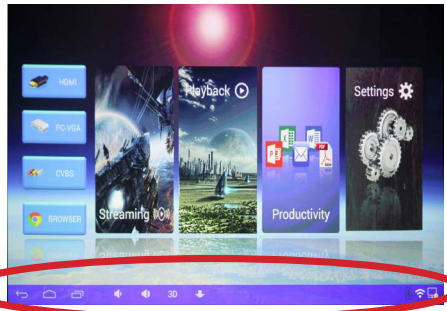
## Pop-Up Menu:

The Pop-Up Menu may be accessed with a mouse by clicking the “up” arrow at the bottom of the screen and may be closed by clicking the “down” arrow.

The Pop-Up Menu allows the user to access Main Menu, Open Applications, Volume and 3D Capabilities.



Arrow to bring up Pop-Up Menu

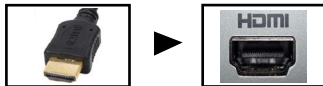


Pop-Up Menu

# Connecting to a Computer via HDMI

## Step 1:

Connect one end of the HDMI Cable to your computer's HDMI Adapter.



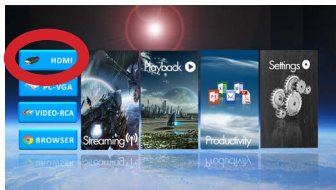
## Step 2:

Connect the other end of the HDMI Cord to your P450 Pro's HDMI port.



## Step 3:

In the Main Menu Select the "Inputs" icon and then the "HDMI" Icon.



Select "HDMI" icon

# Connecting to a Computer Cont.

## Step 4:

Enabling HDMI output on your Computer – To enable HDMI output on your computer most computers require “turning on” the video output feature. Each computer is different. Please consult your owner’s manual for instructions to enable HDMI output. Below are standard instructions for a Windows 10 computer – not all systems are the same.

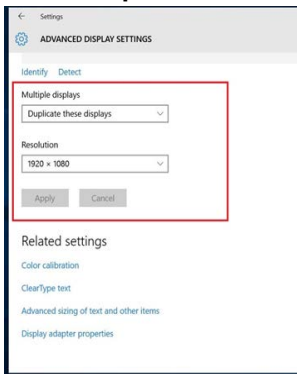
## Step 5:



Press Windows+P to toggle through display settings. Select either “Duplicate” or “Extend” depending on your viewing option.

*NOTE: different operating systems may differ*

## Step 6:

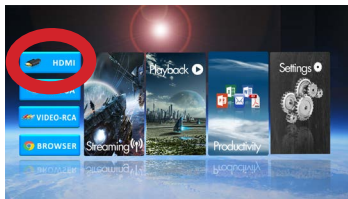


1. Right click on computer desktop and select “Screen Resolution”
2. Display Properties window will pop up and select the advance display settings
3. Please make sure the Multiple displays has the “Duplicate these displays” option selected and the Resolution is 1920 x 1080 or below as pictured in the red box.
4. If the image is blurry or the text is not legible, adjust the screen resolution.

# Connecting to HDMI Video Source

## Step 1:

In the Main Menu



Select “HDMI” icon

## Step 2:

Turn on your multimedia device.

The projector should automatically detect a Blu-Ray player or HDMI video source as 1920x1080p resolution. This resolution includes “overscan” which means that the edges of the display will be cutoff. You may adjust accordingly to your devices best output resolution.

## Connectivity with multimedia devices

The P450 Pro can connect to many media devices including: iPod, iPhone, iPad, DVD players, smart phones, cameras, video game consoles and other peripherals with ease.

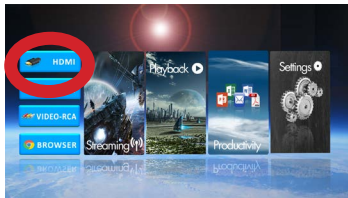
*NOTE: Some smart phones require video out capabilities to be displayed with the P450 Pro. Check with your phone manufacturer.*

# Playing 3D through HDMI Video

3D Video can be played through the 3D compliant HDMI port. First connect your 3D output device (for example Blu-Ray player) to the projector.

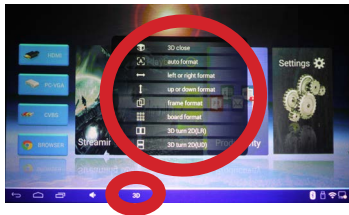
## Step 1:

In the Main Menu



Select "HDMI" option

3D Menu



## Step 2:

To Enable 3D mode there are two options.

- (1) Press the "3D" button on the remote control.
- (2) Pull up the Projector control menu by clicking on the "up" arrow on the bottom of the screen (requires mouse). Then click the 3D button and select the 3D content.

# Connecting to a Computer via VGA

## Step 1:

Connect one end of the VGA Cable to your computer's VGA Adapter.



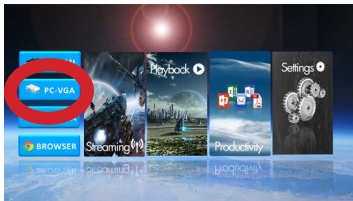
## Step 2:

Connect the other end of the VGA Cord to your P450 Pro's VGA port.



## Step 3:

In the Main Menu Select the "VGA" Icon.



Select "VGA" icon



# Connecting to a Computer Cont.

## Step 4:

Enabling VGA output on your Computer – To enable VGA output on your computer most computers require “turning on” the video output feature. Each computer is different. Please consult your owner’s manual for instructions to enable VGA output. Below are standard instructions for a Windows 7 computer – not all systems are the same.

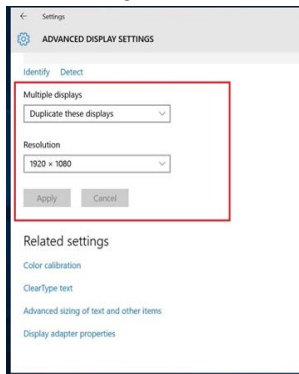
## Step 5:



Press Windows+P to toggle through display settings. Select either “Duplicate” or “Extend” depending on your viewing option.

*NOTE: different operating systems may differ*

## Step 6:

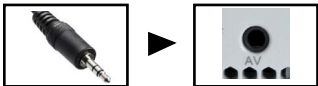


1. Right click on computer desktop and select “Screen Resolution”
2. Display Properties window will pop up and select the advance display settings
3. Please make sure the Multiple displays has the “Duplicate these displays” option selected and the Resolution is 1920 x 1080 or below as pictured in the red box.
4. If the image is blurry or the text is not legible, adjust the screen resolution.

# Connecting to Composite Video

## Step 1:

Connect the 3.5mm Composite A/V Cable to the back of the P450 Pro.



## Step 2:

Connect the composite end of the AV Cable (Red, White, Yellow) to your device.



# Connecting to Composite Video Cont.

## Step 3:

In the Main Menu



Select "RCA" Icon

## Step 4:

Turn on your multimedia device.

## Connectivity with multimedia devices

The P450 Pro can connect to many media devices including: iPod, iPhone, iPad, VHS players, DVD players, smart phones, cameras, video game consoles and other peripherals with ease.

*NOTE: Some smart phones require video out capabilities to be displayed with the P450 Pro. Check with your phone manufacturer.*

# Loading External Content

The P450 Pro can read files of the supported file type from both a Micro SD Card and USB Drive.

Supported file types include:  
**MP3 / WMA / OGG / WAV /**  
**JPG / AVI / MKV / BMP / GIF /**  
**XLS / PPT / DOC / PDF / TXT**



(up to 32 GB)



(up to 32 GB)

# Loading External Content Cont.

## How to insert your Micro SD Card

- Slide in your SD card into the SD card slot on the side of the P450 Pro (as shown in picture).
- Gently slide the SD card until it clicks into place.

## How to insert your USB Drive

- Slide your USB Drive into the USB port on the back of the P450 Pro (as shown in picture)
- Gently slide the drive until it cannot go in any further.

*\*For supported file formats  
please see page 17 or the Specification section of this manual*



(up to 32 GB)



(up to 32 GB)

# Loading External Content Cont.



## Playback Menu

- Once your SD Card or USB Drive are inserted into the projector, the “Playback” Menu will load automatically.
- The Playback Menu may also be accessed from the Main Menu

*NOTE: Office, PDF and productivity files need to be accessed through the Document Viewer App  
(Found in the Productivity Application, page 32).*

## Searching for a Specific File Type?

- Clicking the icons on the left hand side of the “Playback” Menu will automatically search for supported file formats (Pictures, Music and Videos).
- Highlight the desired file you would like to open and click “OK” or double click to access the file.



**Return:** Brings you back to the main menu

# Video Player Menu

## Opening a file:

- Select the “Playback” icon (Fig. 2.1)
- To Sort for Videos highlight the video-camera icon on the left side of the “Streaming” submenu (Fig. 2.2). Otherwise scroll through the files by using the up/down key and highlight desired file.

Fig. 2.1

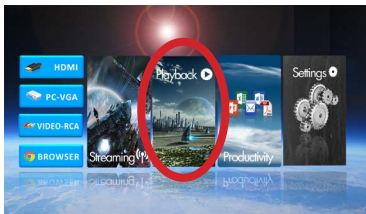


Fig. 2.2

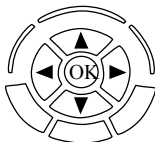


*The P450 Pro will show all folders and files you have on your USB or MicroSD drive. Use the navigation buttons to select folders or files.*

# Video Player Menu

## While Playing Videos

While playing videos the volume and keystone are adjustable. Further controls are available in the video player submenu - which is accessed through the “OK” button.



Volume Up



Positive Keystone Adjustment



Volume Down

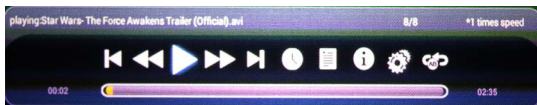


Negative Keystone Adjustment



Enter Video Player Submenu

- To open/hide the video playback menu, use the “OK” and “Back” Buttons on the projector.

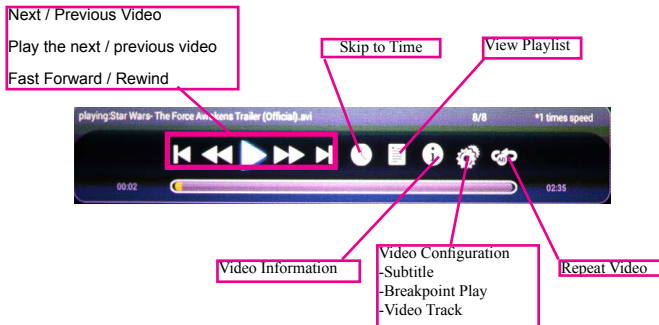




# Video Player Sub-Menu

## Playing Videos

Video Submenu: While the video is playing, bring up the “Submenu” by clicking “Ok” or double clicking on the video. The video submenu allows the following functions:



- To open/hide the video playback menu, use the “OK” and “Back” buttons on the projector.
- To open/hide the video playback menu, use the “OK” and “Back” Buttons on the projector.

# Video Player Menu

## How do I loop a video?

1. Navigate the folders until you reach the file you wish to play.
2. Highlight the file you want to play, then confirm the selection.
3. Move selection on video player menu to "Repeat", and confirm the selection.
4. The video will now loop after playback is finished.

## How do I turn on the subtitles (if available)?

1. Press "Ok" when the video is playing to bring up the submenu.
2. Navigate using either remote or onboard buttons to the video configuration.
3. Select it and press on subtitles to turn it on.

# Playing 3D Videos

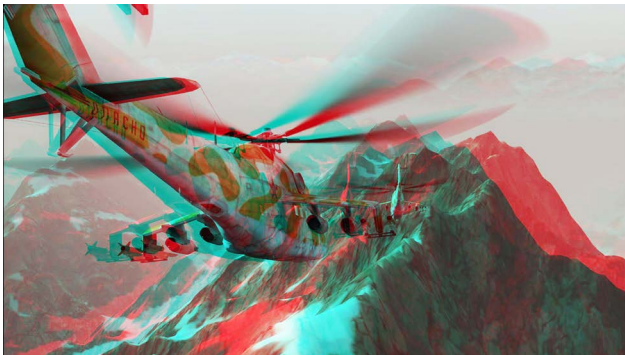
3D videos are videos compatible with Active Shutter 3D devices. These videos are typically labelled “3D”. 3D videos are typically played in right/left or top/bottom content, so on a non-3D device the video will appear to be split in half. 3D capable devices will then combine in the video for true 3D mode.



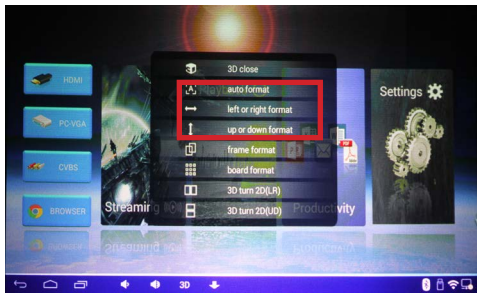
# How to Play 3D Videos

## Playing 3D Videos

To play a 3D video, load the 3D video through the “Playback” submenu. As the video begins to play, select the “Source” button on the keypad or remote control to convert the content into 3D mode. The video will now appear “fuzzy”. This means the video is now in 3D mode. Put on the Active 3D glasses and they should automatically sync to the content.



# How to Play 3D Videos Cont.

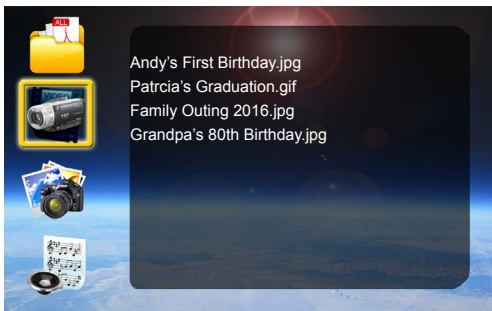


## Activating 3D Mode

After selecting the “Source” button, you can choose either “left or right format” or “up or down format” depending on how your 3D content looks. You can also choose the “auto format” option and the projector will automatically choose the right format for you.

*\*Active shutter glasses are glasses compatible with Active Shutter TVs. They are available for purchase online and through the P450 Pro “Accessories” section.*

# Viewing Pictures



- To view pictures, access the content via the “Playback” submenu (See page 19).
- To sort for Pictures, highlight the Camera/Photo icon on the left. Otherwise, scroll through the files by using the up/down key and highlight the desired file.
- While the Picture is playing, bring up the “Submenu” by clicking “OK” or double clicking on the picture.

# Photo Sub-Menu

## Viewing Pictures:

The Photo Sub-Menu can be accessed by pressing “OK” during picture slide-show playback. To exit the Photo Sub-Menu press the “Back” button. To navigate the playback menu, use the directional buttons on the navigation pad or remote to highlight the option you wish to choose.

- To open/hide the photo playback menu, use the “OK” and “Back” button on the projector.



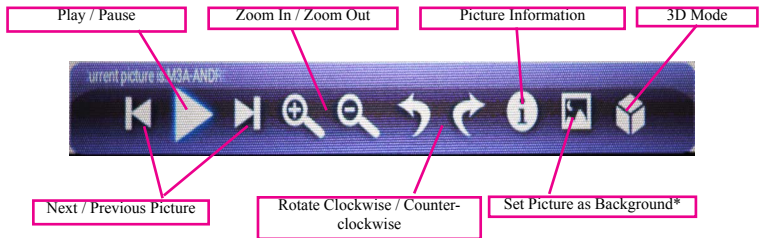
- |                      |                              |
|----------------------|------------------------------|
| Move selection left  | Positive Keystone Adjustment |
| Move selection right | Negative Keystone Adjustment |



# Photo Sub-Menu Cont.

## Viewing Pictures:

After selecting a picture, bring up the photo submenu by clicking on “OK” or double clicking the picture. The photo submenu allows the following functions:



*\*Warning: setting picture as background requires factory restore to restore to original desktop screen*



# Photo Slideshow FAQ

## How do I play a slideshow?

1. Click on the Playback menu.
2. Navigate to the folder that contains the pictures you wish to view in the slideshow.
3. Confirm selection of the first picture.
4. Press “play” in the photo menu.
5. Slideshow will now play.

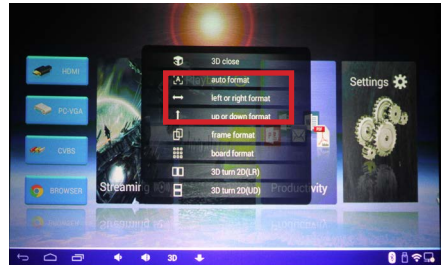
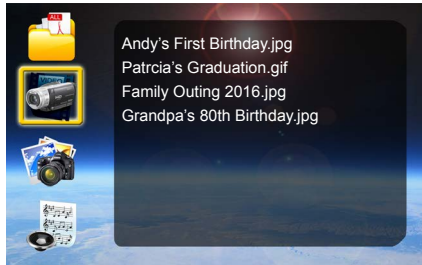
*NOTE: Selecting “repeat” will loop slideshow.*

## How do I manually control the slideshow?

1. After selecting the photo you wish to be displayed, you can press “play” to start the slideshow (as outlined in the previous FAQ).
2. To manually control the slideshow, you must stop the slideshow with the “stop” button.
3. You may use either the controls on your remote or on top of the projector itself to flip through the pictures in the current playlist.
4. You can change the slideshow duration in the Settings Menu (Main Menu -> Settings -> Picture)

# Viewing 3D Pictures

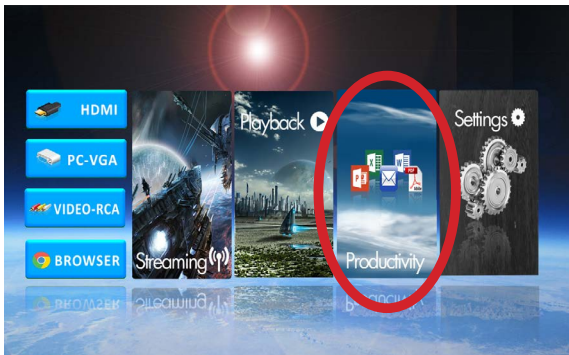
- To view pictures, select a picture via the “Playback” submenu.
- While the Picture is playing, click the “Source” button and turn on the 3D mode depending on which format you have.



# Viewing Productivity Documents

## Microsoft Office and Adobe PDF Documents

- Microsoft Office and Adobe PDF Documents can be viewed with the document viewer.
- To access the document viewer, select “Productivity” from the Main Menu



Main Menu Screen

# Viewing Productivity Documents Cont.

## Choosing Documents to View

- After selecting “Productivity” from the Main Menu, select “Office Viewer” to view documents.
- In the Office Viewer application, select “Folders” or “Cloud Storage” to view the files you wish to see.



Productivity Screen

## Office Viewer Application

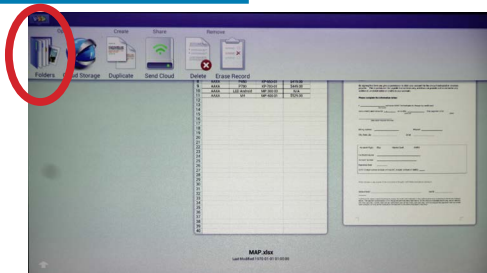
- Documents from an SD Card and USB Drive may be viewed in addition to accounts connected to DropBox.
- Supported file formats include **\*.DOC**, **\*.XLS**, **\*.PPT**, **\*.PDF**.

*Some file versions may not be compatible and file names must be alphanumeric only.*

# Viewing Productivity Documents Cont.

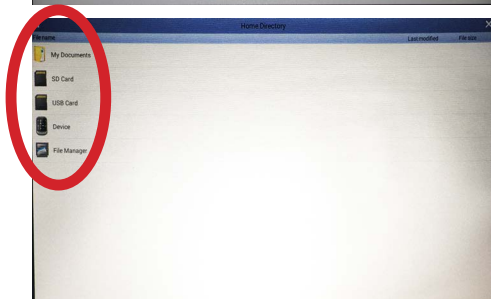
## Step 1:

Highlight the Folder Icon



## Step 2:

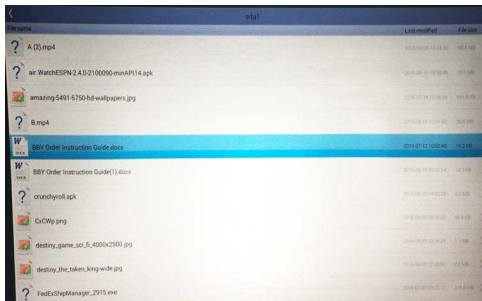
Select Source



# Viewing Productivity Documents Cont.

## Step 3:

Highlight the Productivity File and click  
“OK”



## Step 4:

The file should display automatically

*NOTE: For a more comprehensive user guide  
please visit our FAQ section or search online for  
Kingsoft WPS Office Viewer user guide*

*Need help with the document viewer? Please e-mail us at [pro\\_support@aaxatech.com](mailto:pro_support@aaxatech.com)*

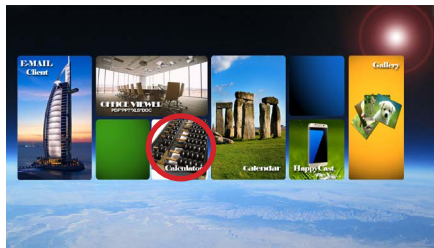
# Viewing Productivity Documents

## E-mail Client

The onboard e-mail client allows users to load their existing e-mails. Typical configuration settings can usually be found through your web-hosts FAQ section.

## Calculator

A basic function calculator.



# Smartphone Mirroring

The P450 Pro employs a “Happy Cast” smart phone mirroring system that is compatible both with Apple Airplay as well as Android systems.

## Mirroring with an iPhone:

- Select the “Productivity” icon (Fig. 2.3).
- Select the “Happy Cast” option (Fig. 2.4).
- The application will open and next step will be to activate airplay on your iPhone or Apple device.

Fig. 2.3

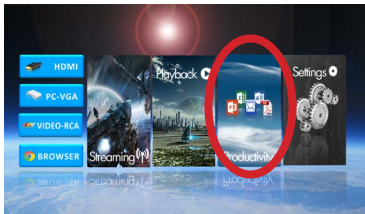
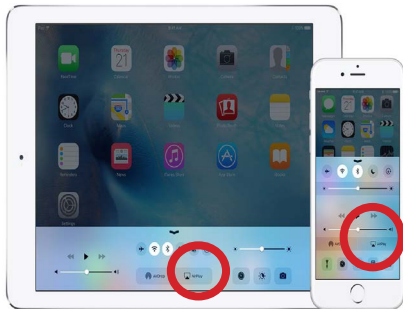


Fig. 2.4





# iPhone Smartphone Mirroring



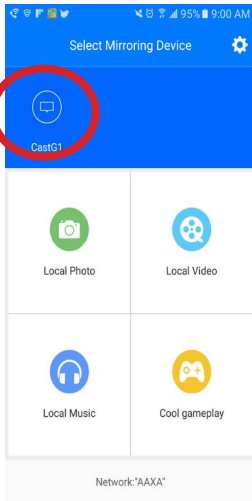
## Turning on Airplay

- Swipe up on your iPhone to access the Airplay option as shown above.
- Select Airplay. Once turned on, it will show you the Happy Cast connection. Select it and make sure the mirroring is switched on.

## Projector

- You should already have the Happy Cast App opened on the projector and it will mirror the Apple device.
- Adjust the settings in the app if necessary.

# Android Smartphone Mirroring



## Downloading HappyCast App

- Please visit this URL: <http://www.aaxatech.com/happycast.apk> on your android phone to download Happy Cast.
- After finishing installing on the phone please open the Happy Cast app and connect to the Projector's Happy Cast connection.

## Projector

- You should already have the Happy Cast App opened on the projector and it will mirror the Android phone.
- Adjust the settings in the app if necessary

# Connecting to Wi-Fi

## Connecting to Wi-Fi:

- Select the “Settings” icon (Fig. 2.5)
- Select the “Network Settings” option and navigate to your Wi-Fi network. Click on it to connect.
- A window will appear and ask for a password, please type it in and when finished press “Connect” and the projector will connect to your Wi-Fi.

Fig. 2.5

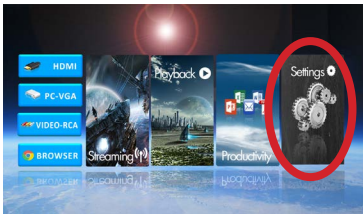
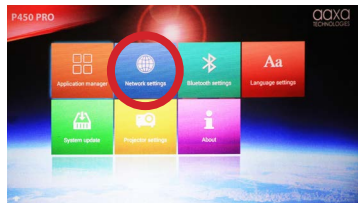


Fig. 2.6



Please see next page for steps to connect to a Wi-Fi connection.

# Connecting to Wi-Fi FAQ

## Connecting to Wi-Fi:

The Projector features a Wi-Fi radio capable of 802.11 B/G/N connection. This means it is compatible with most Wi-Fi routers. To connect to a Wi-Fi router follow the following steps:

- Step 1:** Access the Network Settings Submenu, Settings -> Network Settings (Fig. 2.6)
- Step 2:** Turn Wi-Fi radio to “On” by highlighting and toggling the Wi-Fi Button under Wi-Fi setting (Fig. 2.7)
- Step 3:** Select the appropriate Router (Fig. 2.8)
- Step 4:** Enter the router password in the password selection. It is recommended that the automatic IP address acquisition be turned on

## Trouble Shooting

- 1. Unable to connect
  - a. Check Security Settings – WPA/ WPA2 PSK
  - b. Check if Router is in range

Fig. 2.7

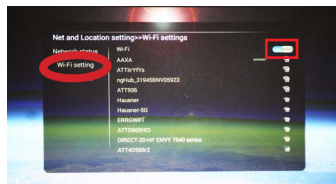
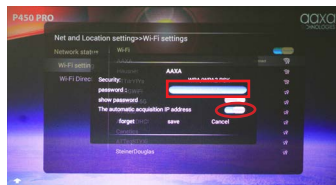


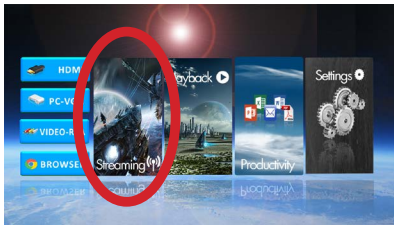
Fig. 2.8



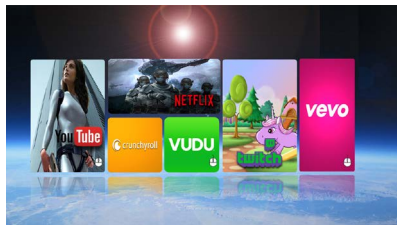
# Streaming Applications

## Streaming Applications

- To access the Streaming Application, select “Streaming” from the Main Menu.
- The P450 Pro enables video streaming from selected applications. Please visit the product website for additional information and firmware updates.



Main Menu Screen



Streaming Screen

- Streaming applications are accessible after Wi-Fi internet service is established. Most applications require a log-in account.
- It is highly recommended to use a mouse to access streaming content. The keypad/remote control may not be compatible with app updates.
- Applications with the “mouse” icon require the use of a mouse to navigate correctly.

# Streaming Applications Cont.

## Troubleshooting

Application Hangs or Freezes

- Try clearing the cache (see Settings - Application Manager)

Update Required

- If an update is required, you may be able to obtain it from the product website.

Poor Video Playback

- Possible Causes:

Poor Wi-Fi Connection

Too many open applications

Too many Bluetooth devices

Device Strain - Try reducing brightness to Standard or Eco mode

# Connecting to Bluetooth Devices

## Connecting to BlueTooth:

- Select the “Settings” icon (Fig. 2.9)
- Select the “Bluetooth Settings” option and navigate to your Bluetooth Device and click on it to connect.
- The projector features a Bluetooth radio (BT). The Bluetooth radio is designed to connect Bluetooth enabled devices, typically either a Bluetooth Mouse or Bluetooth Speaker. Two Bluetooth devices can be connected at the same time, but it is not recommended especially if streaming videos.

Fig. 2.9

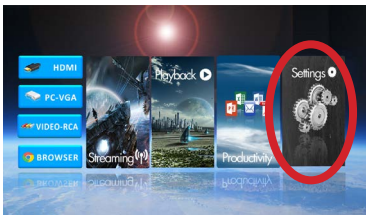
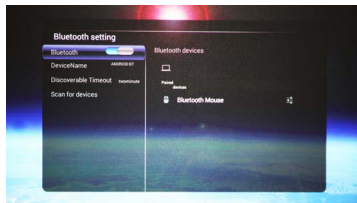


Fig. 3.0



Please see next page for steps to connect to Bluetooth devices

# Bluetooth Mouse & Speaker

## To connect a Bluetooth Mouse/Speaker

**Step 1:** Access the Bluetooth Menu (Settings → Bluetooth).

**Step 2:** Turn on Bluetooth functionality.

**Step 3:** Turn on your Bluetooth device and enable discovery. This varies with each device. Some devices require the power switch to be turned “on”. Other devices have a bluetooth icon that is pressed to make the device “discoverable”.

**Step 4:** If your device does not pop up automatically, click on “Scan for Devices”.

**Step 5:** Highlight your device and click “Ok” to connect. Your device should show “connecting”. If a PIN is asked, try 0000 or 1234 – these are the standard PIN codes. If this doesn’t work check with your device MFG for the pin.



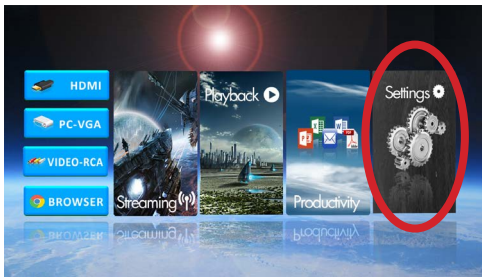
# Trouble Shooting

- Some BT Mice will “go to sleep”. Double check the connection screen to see if the BT mouse is still connected. If not, try to double click on the mouse or reconnect the device.
- BT Mouse does not “wake up” after going to sleep, toggle BT mouse on/off.
- Disconnecting. It takes 10-15 seconds for BT devices to connect / disconnect from the system. Failure to wait for this time could result in an improper connection. Check to ensure device is connected in the BT submenu.
- If the Bluetooth device does not automatically connect back please go to the Bluetooth settings and press on the device to connect back to it.
- If the device still does not reconnect please press on the icon on the right of the device’s name to unpair the device and pair it again.

# Settings Menu

## Chapter 3

The Settings Menu can be accessed by selecting “Settings” on the main menu.



Within the settings menu there are seven more submenus that allow you to customize your P450 Pro to the settings you want.

- **Application Manager**
- **Network Settings**
- **Bluetooth Settings**
- **Language Settings**
- **System Update**
- **Projector Settings**
- **About**

# Application Manager

## Application Setting

- The Application Manager allows the management of onboard applications. The primary purpose of the Application Manager is to reset / remove existing apps
  1. Clearing the App Data / Cache – Clearing the App cache is sometimes necessary to remove corrupted information and reset old logins
  2. Force Stop – If an application is misbehaving use this function to stop the app
  3. Uninstall – Use this function to uninstall unwanted applications
  4. Move to SD Card – This feature is disabled and unsupported

## SDcard Application

- This feature is disabled and unsupported

# Bluetooth & Network Settings

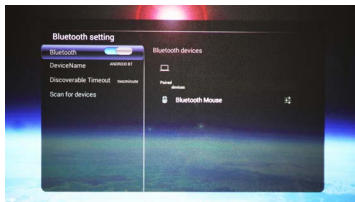
## Network Settings

- Please see Connecting to Wi-Fi section (page 40).
- **Network status**- Shows the info and status of your connected Wi-Fi
- **Wi-Fi setting**- Where you will find the list of available Wi-Fi connections that are nearby
- **Wi-Fi Direct**- This feature has been disabled



## Bluetooth Setting

- For Bluetooth Connectivity please see page 44.
- **Bluetooth** Enable On/Off
- **Device Name**- Your Projector's Bluetooth name
- **Discoverable Timeout**- The time the projector will timeout when trying to search for a Bluetooth device
- **Scan for Devices**- Will scan for any nearby Bluetooth device



# System Update & Language Settings

## System Update

- Update your projector through a Wi-Fi connection

## System information

- Shows the system version, MAC address, and the memory information of the projector

## Restore Factory

- Restores your projector back to the factory default
- Clears your Google account
- Clears system and application data and settings
- Sets the projector settings back to factory

## Language Settings

- Selecting a Language: The Projector supports 10 different language settings. These languages include English, Spanish, German, French, Italian. Additional languages are available through custom firmware.
- Input Method: The input method is a standard AOSP English keyboard. Other input methods are available through custom firmware.
- AOSP Keyboard Settings: Customization is not supported

# Projector Settings & About

- **Audio Projector** – The Audio projector turns on/off the projector speakers. This is useful when employing a Bluetooth speaker or other external speakers.
- **Brightness** – There are 3x brightness settings available Eco, Standard, and Boost. NOTE: Boost mode should only be used in low temperature environments with adequate clearance of exhaust / intake vents. A tripod is highly recommended. DO NOT block vents while operating in Boost mode.
- **Projection** – This submenu allows the selection of different viewing orientations as a result of either rear projection or upside-down (inverted) mounting.
- **Keystone Correction** – Please see Keystone Adjustments on page 53.

## About:

### Projector Model

- Shows the projector model name

### Android system version

- Shows the Android OS version

### Memory information

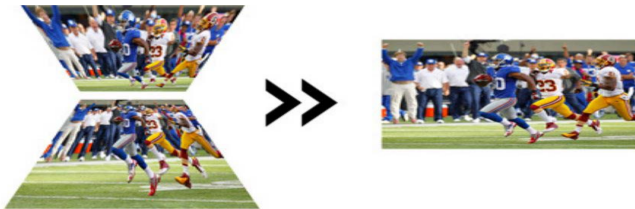
- Shows the amount of memory that is used up by the projector



## Other Applications

There may exist different firmware versions to support different applications. Please e-mail AAXA Technologies or check our FAQ section for more information.

# Keystone Adjustments



## What is Keystoneing?

“Keystoneing” occurs when a projector is aligned non-perpendicularly to a screen, or when the projection screen has an angled surface. The image that results from one of these misalignments will look trapezoidal rather than square.

## Digital Keystone Adjustments

By adding a special, selectable algorithm to the scaling, some new projectors are able to alter the image before it reaches the projection lens. The result is a squared image, even at an angle.



# Keystone Adjustments FAQ

## How to Correct Keystone

- If the image looks trapezoidal with the base larger (as pictured right), press the bottom button on the directional pad on the top of the P450 Pro until the keystone effect corrects and the picture turns into a square projection.



- If the image looks trapezoidal with the top larger (as pictured right), press the top button on the directional pad on the top of the P450 Pro until the keystone effect corrects and the picture turns into a square projection.



## Troubleshooting

### IMAGE IS BLURRED

Possible Causes	Solution
The Projector is not in focus	Adjust the focus with the focus adjustment dial until the image comes into focus
The Projector is offset from plane / angle of operation	Move the projector so that it is both 180 degrees and on an even plane with the screen.

### NO SYNC, NO SIGNAL

1. Be sure to setup the computer to enable a video signal output. On some laptops this is done by pressing and holding Function F5 key. If using the P450 Pro as an external monitor on Windows based systems, this can be done by selecting "extend my desktop to this monitor". The native resolution of the P450 Pro projector is 1280x800. Depending on the video driver different resolutions may need to be selected for proper output.

# Technical Details Cont.

## Troubleshooting

### THE PROJECTOR DOES NOT TURN ON

Possible Causes	Solution
There is no power	Check to ensure the power outlet source is good. Check the power adapter to ensure a proper connection with the wall outlet as well as the projector. Confirm that the unit is charged and has enough power
The power button was not held long enough	To power on the projector, the power button needs to be depressed for a full 3 seconds. Try holding the power button until the optical engine turns on

### NO PICTURE / FILE NOT SUPPORTED

Possible Causes	Solution
The video source is not properly connected or selected	Check the video source signal to ensure that it is properly connected. Select the current input source by choosing the input desired from the main menu
Incorrect file extension / Video is encoded with incorrect codec	Please refer to "Specifications" page to see which file types and codex are supported. Verify that the file was encoded properly.

# Specifications

Brightness:	500 Lumens
Native Resolution:	1280x800
Contrast Ratio:	2000:1
Aspect Ratio:	16:10
Projection Lens:	Manual Focus
Image Size:	20~140 inches
Lamp:	Triple RGB LEDs with Vibrant Color Technology Life 15,000hrs
Video in:	Composite A/V VGA(mini-VGA) HDMI
Audio Output:	1.0 W (x2) stereo speakers 3.5 mm audio jack
SD Card:	MicroSD Card Slot (32GB maximum)
USB:	5 Pin USB 2.0 (Full Size) (32GB maximum)
Dimensions:	5.9" x 3.8" x 1.5"
Weight:	0.82 lbs
Supported File Formats:	MP3, WMA, OGG, WAV, AVI, BMP, JPG, TXT
3D Engine:	3D Active Shutter Technology
Android Version:	4.4.4 (KitKat)
Processor:	High Performance Dual Core
RAM:	1GB
Onboard Storage:	8GB
WiFi:	802.11 b/g/n
Bluetooth:	2.0



# Notes

---

---

---

---

---

---

---

---

---

---

Please direct all customer service inquiries to:

AAXA Technologies, Inc.  
1541 Parkway Loop  
Tustin, CA 92780  
(714) 957-1999  
[info@aaxatech.com](mailto:info@aaxatech.com)